

ISSUE 1 2018

INSIDE

h

6

FEATURE: IN THE NEIGHBORHOODS

In a three-part series, *h* magazine travels to the Pittsburgh neighborhoods of Homewood, Hazelwood and the Hill District, where The Heinz Endowments and other philanthropies are partnering with residents and local organizations to build on assets and expand opportunities. The first stop is Homewood, a neighborhood at the eastern end of the city where entrepreneurs and artists are working to redefine the community.

Board of Directors

André T. Heinz
Chairman

Teresa Heinz
Chair Emeritus

James M. Walton
Vice Chairman Emeritus

Christopher D. Heinz
John Heinz
Sasha L. Heinz
María Marteinsdóttir
Damon Aherne
Carol R. Brown
Jared L. Cohon
Judith M. Davenport
Franco Harris
Wendy Mackenzie
Shirley M. Malcom
James E. Rohr

The Heinz Endowments was formed from the Howard Heinz Endowment, established in 1941, and the Vira I. Heinz Endowment, established in 1986. It is the product of a deep family commitment to community and the common good that began with H.J. Heinz, and that continues to this day.

The Endowments is based in Pittsburgh, where we use our region as a laboratory for the development of solutions to challenges that are national in scope. Although the majority of our giving is concentrated within southwestern Pennsylvania, we work wherever necessary, including statewide and nationally, to fulfill our mission.

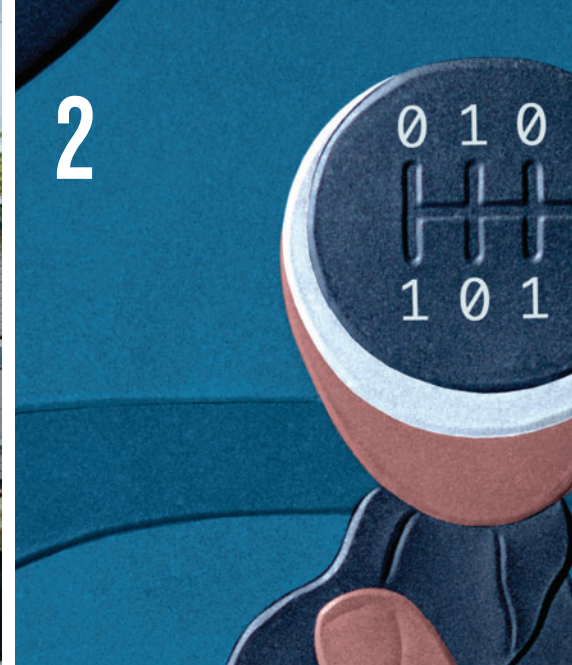
That mission is to help our region become a just and equitable community in which all of its citizens thrive economically, ecologically, educationally, socially and culturally. We also seek to advance knowledge and practice in the field of philanthropy through strategies that focus on our priorities of Creativity, Learning and Sustainability.

In life, Howard Heinz and Vira I. Heinz set high expectations for their philanthropy. Today, the Endowments is committed to doing the same. Our charge is to be diligent, thoughtful and creative in continually working to set new standards of philanthropic excellence. Recognizing that none of our work would be possible without a sound financial base, we also are committed to preserving and enhancing the Endowments' assets through prudent investment management.

h magazine is a publication of The Heinz Endowments. At the Endowments, we are committed to promoting learning in philanthropy and in the specific fields represented by our grantmaking programs. As an expression of that commitment, this publication is intended to share information about significant lessons and insights we are deriving from our work.

Editorial team Linda Braund, John Ellis, Donna Evans Sebastian, Carmen Lee, Grant Oliphant, Scott Roller, Courtney Tolmer. Design: Landesberg Design

About the cover Visual and performance artist Vanessa German created the whimsically colorful Art House in Pittsburgh's Homewood neighborhood, where she welcomes local children to join her in indulging their imagination and creativity. Photo by Sam Fairchild.



2 TECHNOLOGY SHIFT

As the Pittsburgh region takes the stage as a leader in technology innovation and artificial intelligence, making sure today's local workers have a role in this new future is a priority.

8 15208

Pittsburgh's Homewood neighborhood is reinventing itself, reviving the dreams of longtime residents, engaging newcomers, and partnering with civic and philanthropic allies to propel the community forward.

14 STRENGTHENING FAMILY TIES

An array of support services being offered in Homewood provide parents like Shaquala Venson and Dorian Page options for addressing the needs of their families at any given time and under a variety of circumstances.

20 ENTREPRENEURIAL ENERGY

Economic development is critical to revitalization efforts in Homewood, with philanthropic support given to local entrepreneurs to ensure their stake in the community's success.

24 IN THE HOUSE

Tyree Allie used to keep to himself before attending the Lighthouse Project at the Homewood-Brushton YMCA, but now he creates and produces music, opening up new lines of communication to his peers and teachers.

28 GROWING GREEN ACTIVISTS

An increasing number of Homewood residents are finding that a key component of improving their quality of life involves creating an environmentally healthy community for themselves and their families.

34 STATE OF THE ARTS

Integral to revitalization efforts in Homewood are artists and arts organizations whose work brings vibrancy, enthusiasm and hope to the community.

40 THE WRITE PLACE

Within the City of Pittsburgh is the City of Asylum, which brings together international writers fleeing persecution with local artists and art lovers to create a lively and creative community that enriches everyone.

46 HERE AND THERE